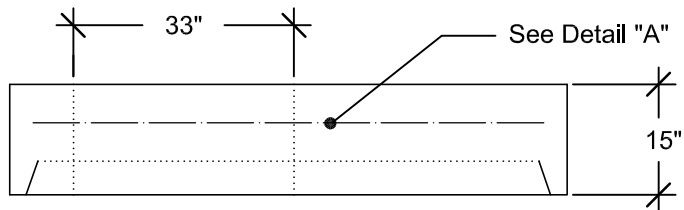


Precast Concrete Manhole (96" ID) Sanitary Sewer (Flat Top & Steps)

SPECIFICATIONS:

ASTM C478
 Concrete: 4000 PSI (Min.)
 Approx. Wt./LinFt: 3090 Lbs.
 Joint O-Ring Gasket

Openings for inlets & outlets are made 4 inches larger in diameter than the outside diameter of the pipe & are located as required per plans.



O-Ring Gasket

