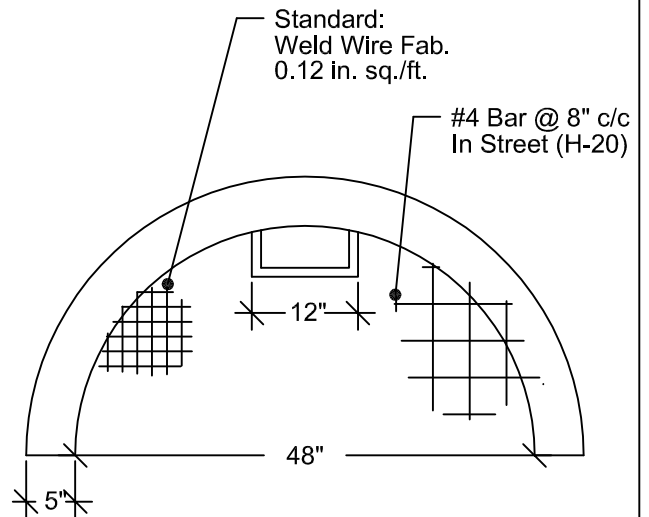
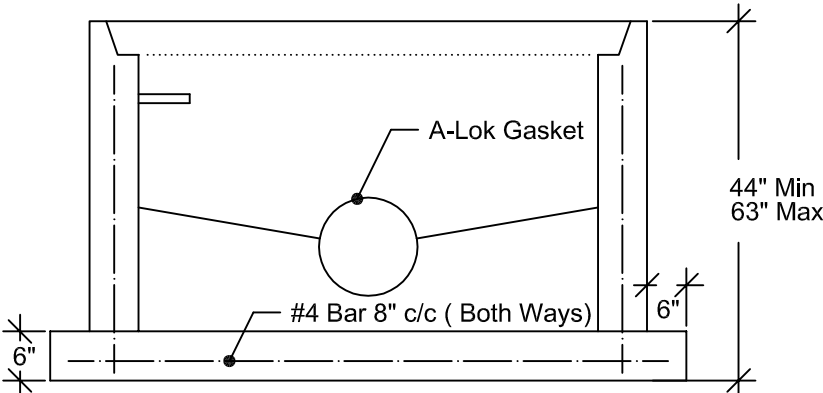
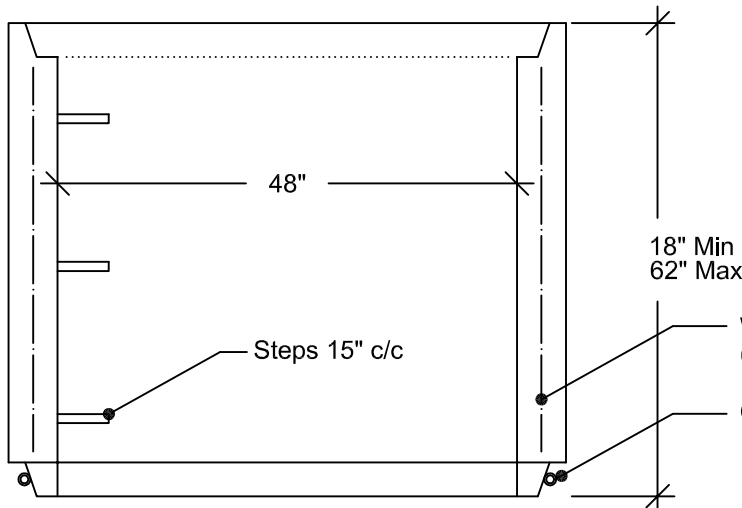
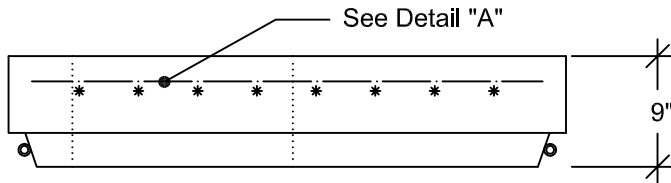
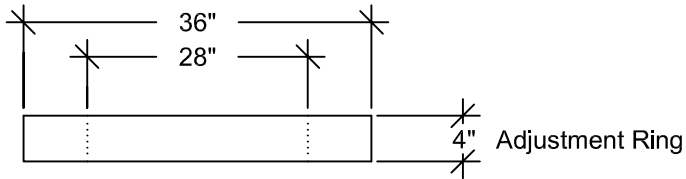


# Precast Concrete Manhole (48" ID) Sanitary Sewer (W/ Extended Bottom, Invert, Flat Top & Steps)

SPECIFICATIONS:

ASTM C478  
Concrete: 4000 PSI (Min.)  
Approx. Wt./LinFt: 870 Lbs.

Openings for inlets & outlets are made to the OD of the intrusions, providing a water tight and flexible joint. These gaskets are located as required per plans.



DETAIL "A"

Trough in invert to be left 1 in below Flow.  
Feathered to flow by contractor.



2100 NORTH 161ST E. AVE.  
TULSA, OKLAHOMA 74116

WWW.GNCCONCRETEPRODUCTS.COM

OFC: (918) 438-1182  
FAX: (918) 438-1185