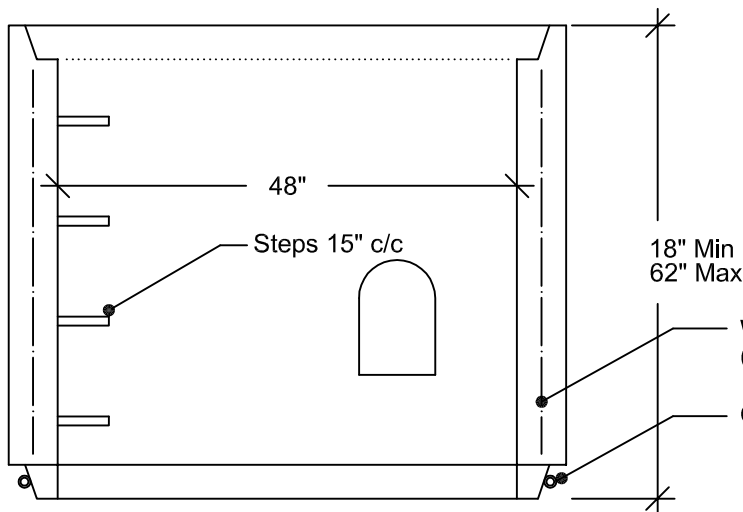
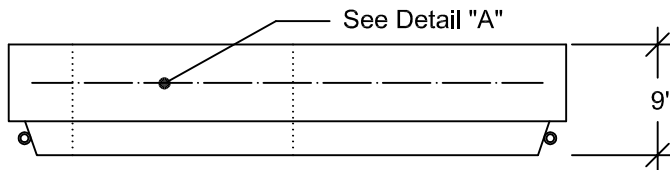
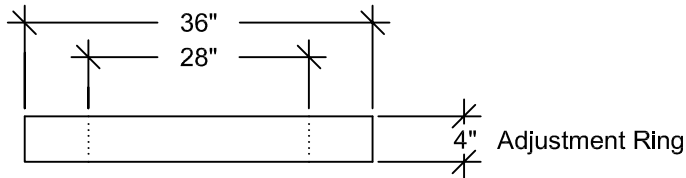


Precast Concrete Manhole (48" ID) Sanitary Sewer (Flat Top)

SPECIFICATIONS:

ASTM C478
 Concrete: 4000 PSI (Min.)
 Approx. Wt./LinFt: 870 Lbs.
 Joint O-Ring Gasket

Openings for inlets & outlets are made 4 inches larger in diameter than the outside diameter of the pipe & are located as required per plans.



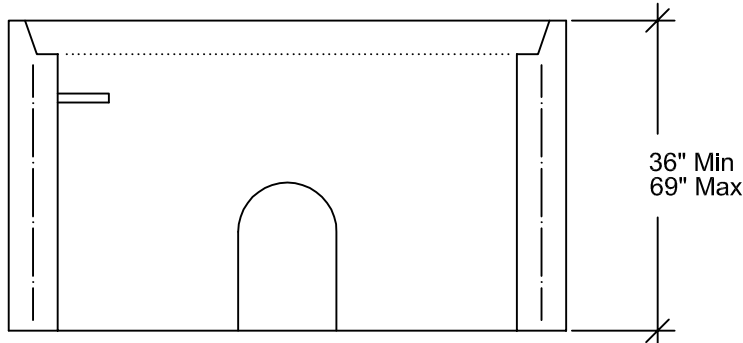
W3.0 Welded Steel Mesh (Min.)
 (0.12 Welded Wire Mesh (Min.))

O-Ring Gasket

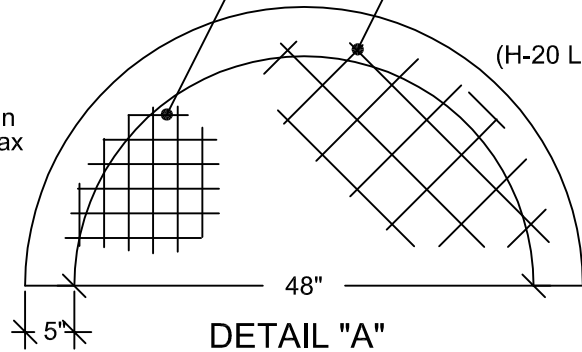
Standard:
 Weld Wire Fab.
 0.12 in. sq./ft.

#4 Bar @ 8" c/c
 In Street (H-20)

(H-20 Loading)



BOTTOM BY OTHER



2100 NORTH 161ST E. AVE.
 TULSA, OKLAHOMA 74116

WWW.GNCCONCRETEPRODUCTS.COM

OFC: (918) 438-1182
 FAX: (918) 438-1185