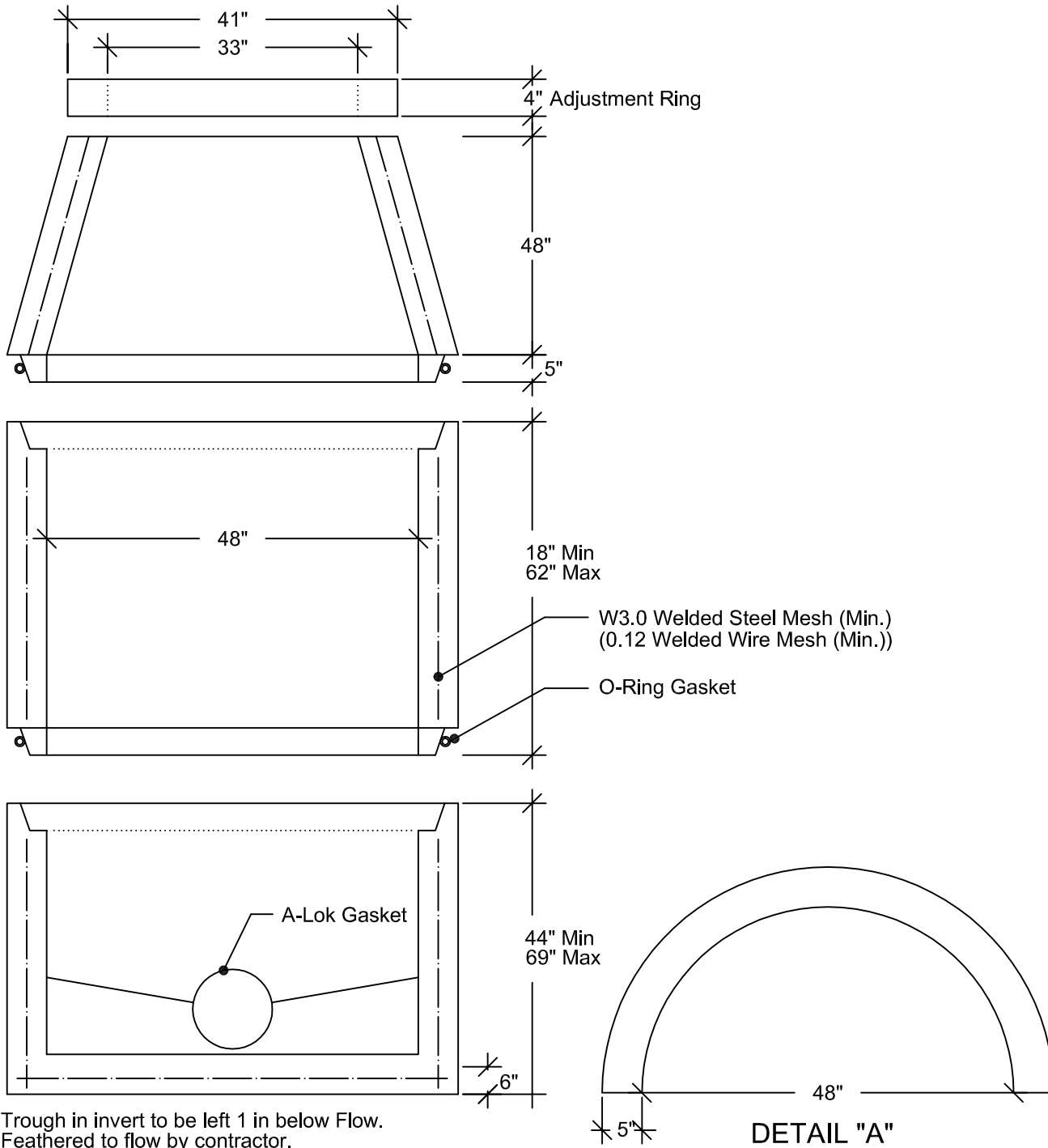


Precast Concrete Manhole (48" ID) Sanitary Sewer (Concentric Cone, Bottom, and Invert)

Openings for inlets & outlets are made to the OD of the intrusions, providing a water tight and flexible joint. These gaskets are located as required per plans.

SPECIFICATIONS:

ASTM C478
Concrete: 4000 PSI (Min.)
Approx. Wt./LinFt: 870 Lbs.
Joint O-Ring Gasket



2100 NORTH 161ST E. AVE.
TULSA, OKLAHOMA 74116



OFC: (918) 438-1182
FAX: (918) 438-1185